

CHAIN (Binding)

BINDER CHAINS (PEERLESS CHAIN)

PROOF COIL-(P 30)

Trade Size		Nominal Material Diameter		Nominal Inside Length		Minimum Inside Width		Weight Per 100 Feet	Working Load Limit	
IN.	MM.	IN.	MM.	IN.	MM.	IN.	MM.	LBS.	LBS.	KGS.
3/16"	5.5	0.217	5.50	0.95	24.13	0.405	10.29	40	800	365
1/4"	7	0.274	7.10	1.236	31.39	0.480	12.19	65	1,300	590
5/16"	8	0.328	8.70	1.285	32.64	0.480	12.19	95	1,900	860
3/8"	10	0.392	10.30	1.374	34.90	0.551	14.00	140	2,650	1,200
1/2"	13	0.509	13.00	1.782	45.30	0.750	18.96	234	4,500	2,030
5/8"	16	0.625	-	2.016	-	0.851	-	375	6,900	3,130

Uses: Proof Coil, as the lowest rated grade of welded chain, is an excellent general purpose chain for applications where there is little need for a high strength to weight ratio. It can be found in tow chains and in binding applications. It is not to be used for overhead lifting.

HIGH TEST-(P 43)

Trade Size		Nominal Material Diameter		Nominal Inside Length		Minimum Inside Width		Weight Per 100 Feet	Working Load Limit	
IN.	MM.	IN.	MM.	IN.	MM.	IN.	MM.	LBS.	LBS.	KGS.
1/4"	7	0.274	7.10	1.236	31.39	0.480	12.19	65	2,600	1,180
5/16"	8	0.328	8.70	1.285	32.64	0.480	12.19	95	3,900	1,770
3/8"	10	0.392	10.30	1.374	34.90	0.551	14.00	140	5,400	2,450
1/2"	13	0.509	13.00	1.782	45.30	0.750	18.96	234	9,200	4,170
5/8"	16	0.625	-	2.016	-	0.851	-	375	13,000	5,910

Uses: High Test chain is an excellent chain for load binding, towing and logging applications. Its higher strength to weight ratio allows for easier handling without sacrificing desired safe working load limit. It is not to be used for overhead lifting.

TRANSPORT-(P 70)

Trade Size		Nominal Material Diameter		Nominal Inside Length		Minimum Inside Width		Weight Per 100 Feet	Working Load Limit	
IN.	MM.	IN.	MM.	IN.	MM.	IN.	MM.	LBS.	LBS.	KGS.
1/4"	7	0.274	7.10	1.236	31.39	0.480	12.19	65	3,150	1,430
5/16"	8	0.334	-	1.120	-	0.480	-	103	4,700	2,130
3/8"	10	0.392	10.30	1.374	34.90	0.551	14.00	140	6,600	2,990
1/2"	13	0.51	13.00	1.782	45.30	0.750	18.96	234	11,300	5,130
5/8"	16	0.625	-	2.016	-	0.851	-	375	15,800	7,170

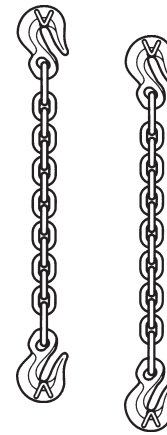
Uses: Transport chain is considered the chain of choice for load binding applications. It is also well suited for tie-downs, towing and logging operations. Its strength to weight ratio exceeds that of Proof Coil and High Test. P-70 chain meets Department of Transportation regulations. It is not to be used for overhead lifting.

CHAIN (Binding)

BINDER CHAINS AND BINDERS (PEERLESS CHAIN)

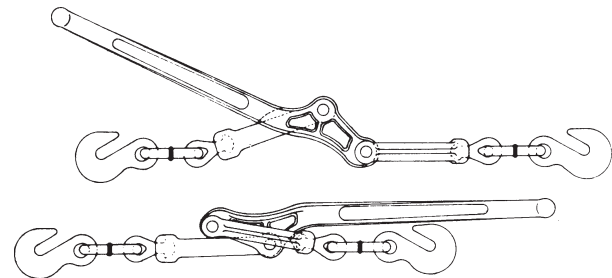
BINDER CHAIN LOAD SPECIFICATIONS

Chain Size	Working Load Limit Proof Coil Grade 30 (lbs.)	Working Load Limit High Test Grade 43 (lbs.)	Working Load Limit Transport Grade 70 (lbs.)
1/4"	1,300	2,600	3,150
5/16"	1,900	3,900	4,700
3/8"	2,650	5,400	6,600
1/2"	4,500	9,200	11,300
5/8"	6,900	13,000	15,800



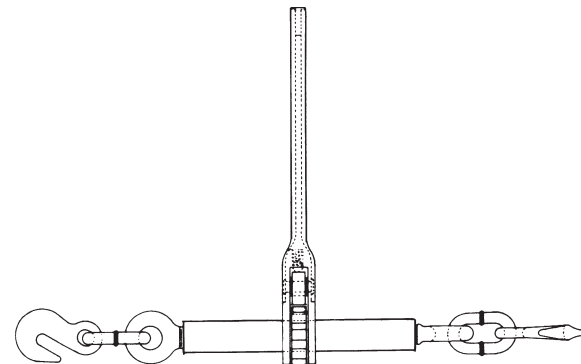
LEVER TYPE LOAD BINDER SPECIFICATIONS

Chain Size		Take Up	Handle Length	Weight Each (lbs.)	Working Load Limit (lbs.)	Part Number
Grade 40	Grade 70					
1/4"	-	3-3/4"	11-3/4"	4	2,600	DB-I
3/8"	5/16"	4-1/2"	16.00"	8.8	5,400	DB-II
1/2"	3/8"	4-1/2"	18.00"	13	9,200	DB-III



RATCHET BINDER SPECIFICATIONS

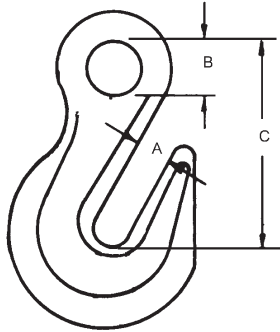
Chain Size		Max Take Up	Barrel Length	Handle Length	Weight Each (lbs.)	Working Load Limit (lbs.)	Part Number
Grade 40	Grade 70						
3/8"	5/16"	8"	10"	15-1/2"	12.5	7,300	DR-1*
1/2"	3/8"	8"	10"	15-1/2"	14	9,200	DR-2
5/8"	1/2"	8"	10"	15-1/2"	15	13,000	DR-3



CHAIN (Binding)

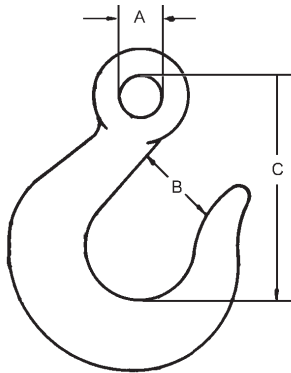
BINDER CHAINS ACCESSORIES

GRADE 43 EYE GRAB HOOK SPECIFICATIONS



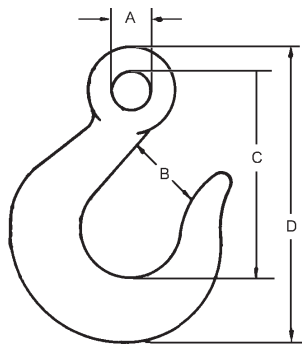
Chain Size	A	B	C	Weight Each (lbs.)	Working Load Limit (lbs.)	Part Number
1/4"	3/8"	17/32"	1-15/16"	0.28	2,600	71192
5/16"	7/16"	5/8"	2-3/8"	0.54	3,900	71292
3/8"	1/2"	25/32"	2-13/16"	0.80	5,400	71392
1/2"	21/32"	15/16"	3-5/8"	1.74	9,200	71592
5/8"	25/32"	1-1/16"	4-33/64"	3.44	13,000	71692
3/4"	15/16"	1-3/8"	5-3/8"	6.1	20,200	71792

GRADE 43 EYE SLIP HOOK SPECIFICATIONS



Chain Size	A	B	C	Weight Each (lbs.)	Working Load Limit (lbs.)	Part Number
1/4"	17/32"	15/16"	2-15/32"	0.42	2,600	75192
5/16"	5/8"	1-1/16"	2-25/32"	0.58	3,900	75292
3/8"	25/32"	1-1/4"	3-5/16"	1.00	5,400	75392
1/2"	15/16"	1-3/4"	4-5/16"	2.50	9,200	75592
5/8"	1-3/16"	2"	5-5/16"	3.70	13,000	75692
3/4"	1-17/32"	2-1/16"	6-1/2"	6.5	11,500	75792

GRADE 63 EYE SLIP HOOK SPECIFICATIONS



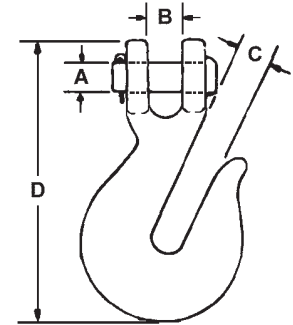
Chain Size	A	B	C	D	Weight Each (lbs.)	Working Load Limit (lbs.)	Part Number
1/4"	17/32"	29/32"	2-1/2"	3-3/4"	0.45	2,750	CM6304
5/16"	5/8"	13/64"	3"	4-13/32"	0.58	3,600	CM6305
3/8"	25/32"	1-7/32"	3-1/2"	5-3/16"	0.98	5,500	CM6306
1/2"	15/16"	1-3/4"	4-5/16"	6-11/32"	2.50	9,400	CM308A
5/8"	1-3/16"	2"	5-5/16"	7-3/4"	3.10	14,200	CM310A

CHAIN (Binding)

BINDER CHAINS ACCESSORIES

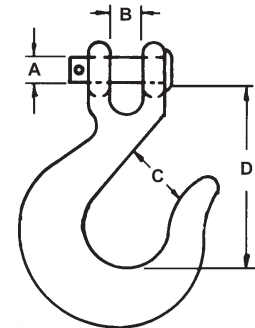
GRADE 43 CLEVIS GRAB HOOK SPECIFICATIONS

Chain Size	A	B	C	D	Weight Each (lbs.)	Working Load Limit (lbs.)	Part Number
1/4"	5/16"	5/16"	3/8"	3-3/8"	0.38	2,600	61192
5/16"	3/8"	3/8"	7/16"	3-29/32"	0.62	3,900	61292
3/8"	7/16"	7/16"	1/2"	4-1/2"	0.96	5,400	61392
1/2"	9/16"	19/32"	21/32"	5-39/64"	2.02	9,200	61592
5/8"	11/16"	3/4"	25/32"	6-7/8"	3.76	13,000	61692



GRADE 43 CLEVIS SLIP HOOK SPECIFICATIONS

Chain Size	A	B	C	D	Weight Each (lbs.)	Working Load Limit (lbs.)	Part Number
1/4"	5/16"	5/16"	15/16"	2-5/16"	0.47	2,600	66192
5/16"	3/8"	3/8"	1-1/16"	2-9/16"	0.73	3,900	66292
3/8"	7/16"	7/16"	1-1/4"	3"	1.16	5,400	66392
1/2"	9/16"	19/32"	1-3/4"	3-15/16"	2.55	9,200	66592



GRADE 63 CLEVIS SLIP HOOK SPECIFICATIONS

Chain Size	A	B	C	D	E	Weight Each (lbs.)	Working Load Limit (lbs.)	Part Number
1/4"	11/32"	5/16"	15/16"	2-5/16"	13/16"	0.47	2,750	CM904A
5/16"	25/64"	3/8"	1-1/16"	2-9/16"	15/16"	0.73	3,600	CM905A
3/8"	1/2"	15/32"	1-1/4"	3"	1-1/8"	1.16	5,500	CM906A
1/2"	19/32"	19/32"	1-3/4"	3-15/16"	1-1/2"	2.55	9,400	CM908A
5/8"	3/4"	3/4"	2"	4-3/4"	1-11/16"	4.24	14,200	CM910A

