

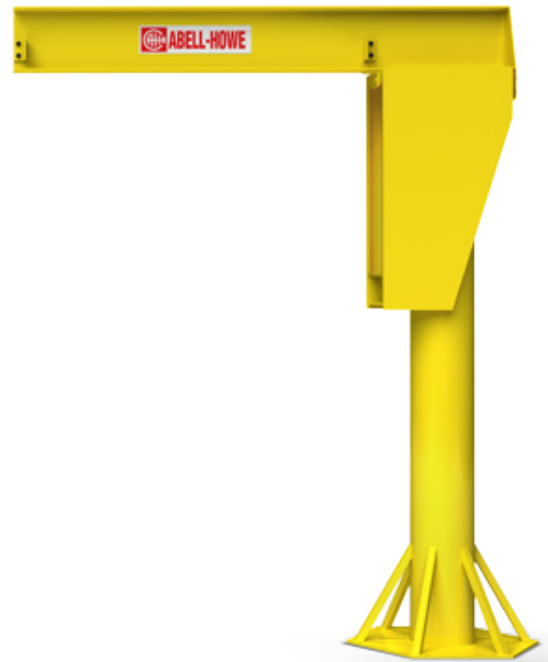


J-904B SERIES

BASE MOUNT PILLAR JIB CRANE

CAPACITY UP TO 10 TONS

The Abell-Howe J-904B Series was developed to be an all purpose jib for heavy duty industrial applications.



BENEFITS & FEATURES

CAPACITIES

1/4 Ton to 10 Tons.

Boom Lengths up to 30 ft. on select capacities.

Under Boom Height from 8 to 30 ft.

SPECIFICATIONS

360 Degree Rotation on a Tapered Roller bearing providing full capacity vertical and radial thrust loading.

Lower section of the head revolves around the pillar on a pair of steel rollers equipped with self-aligning roller bearings.

Large diameter base plate is reinforced with heavy steel gussets for continuous alignment and rigidity.

Anti Lift-off Device.

Bottom roller assembly can be shimmed for boom leveling.

End stops at both ends of the boom for safe trolley travel.

COMPONENT MATERIAL

Mast - Fabricated from heavy wall structural steel pipe with wall thickness sized to minimize deflection.

Boom - W-beam section.

Head section - Rigid steel plate box type with welded construction for minimum deflection between boom and mast.

OPTIONAL ACCESSORIES

Top entry air swivel or electric collector rings on most models.

Rotational stops.

Anchor Bolts with Template.

Wind or Position Lock.

Galvanizing/Custom paint finishes.

Spark-resistant and/or explosion proof construction for hazardous locations.

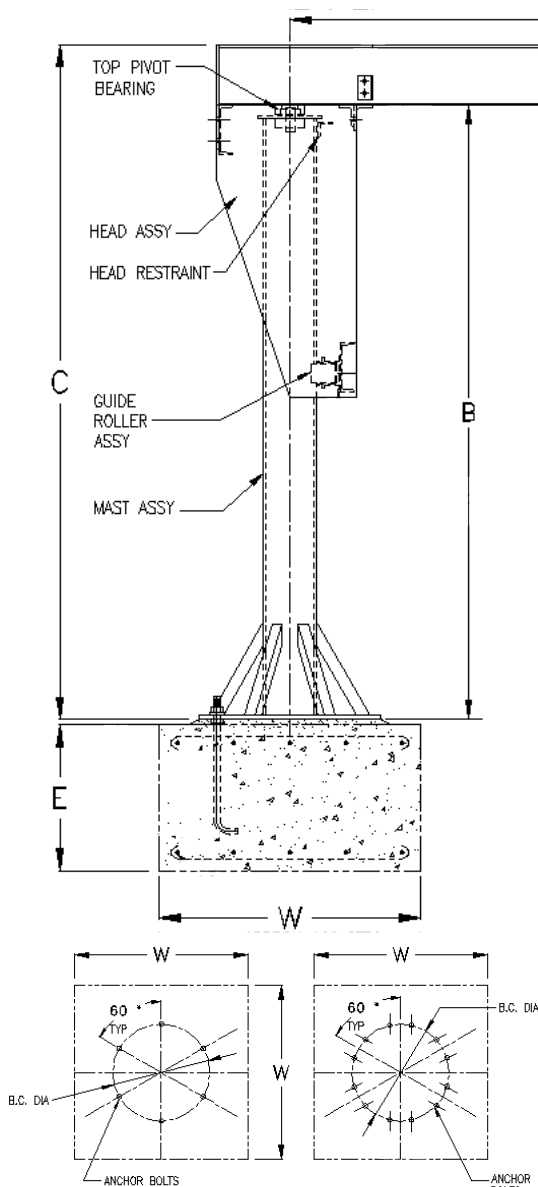
Electric, Air or Hand-gear rotation.

Manual Safety switch.

Messenger wire assembly.



J-904B BASE MOUNT PILLAR JIB CRANE



BOLT PATTERN NO. 6

BOLT PATTERN NO. 12

Model # J-904B-	Pattern No.	B.C. DIA
080	6	24"
120	6	30"
140	6	36"
160	12	42"
180	12	48"
200	12	54"
240	12	60"
300H **	12	66"
360	6	72"
420	6	78"

Chart represents a sample of J-904B Sizes & Capacities

Capacity (Tons)	Model #	Catalog #	Span (A)	Boom Height (B)	Overall Height (C)	Footing Depth (E)	Footing Width (W)
1/4	J-904B-080	4B0055	10'-0"	12'-0"	12'-6 1/4"	3'-0"	4'-0"
	J-904B-120	4B0057	12'-0"	12'-0"	12'-6 1/4"	3'-0"	4'-0"
	J-904B-120	4B0059	14'-0"	12'-0"	12'-8 1/4"	3'-0"	5'-0"
	J-904B-120	4B0061	16'-0"	12'-0"	12'-8 1/4"	3'-0"	5'-0"
	J-904B-120	4B0063	18'-0"	12'-0"	12'-10 3/8"	3'-0"	5'-0"
J-904B-120	4B0065	20'-0"	12'-0"	12'-10 3/8"	3'-0"	5'-0"	
1/2	J-904B-120	4B0224	10'-0"	12'-0"	12'-6 1/4"	3'-0"	4'-0"
	J-904B-120	4B0226	12'-0"	12'-0"	12'-8 1/4"	3'-0"	4'-0"
	J-904B-120	4B0228	14'-0"	12'-0"	13'-0 1/2"	3'-0"	5'-0"
	J-904B-120	4B0230	16'-0"	12'-0"	13'-0 1/2"	3'-0"	5'-0"
	J-904B-140	4B0232	18'-0"	12'-0"	13'-4 1/8"	3'-0"	5'-0"
J-904B-140	4B0234	20'-0"	12'-0"	13'-4 1/8"	3'-0"	5'-0"	
1	J-904B-120	4B0393	10'-0"	12'-0"	12'-8 1/4"	4'-0"	5'-0"
	J-904B-140	4B0395	12'-0"	12'-0"	12'-10 3/8"	4'-0"	6'-0"
	J-904B-140	4B0397	14'-0"	12'-0"	13'-0 1/2"	4'-0"	6'-0"
	J-904B-160	4B0399	16'-0"	12'-0"	13'-0 1/2"	4'-0"	7'-0"
	J-904B-160	4B0401	18'-0"	12'-0"	13'-4 1/8"	4'-0"	7'-0"
J-904B-160	4B0403	20'-0"	12'-0"	13'-4 1/8"	4'-0"	7'-0"	
2	J-904B-140	4B0731	10'-0"	12'-0"	13'-0 1/2"	4'-0"	6'-0"
	J-904B-160	4B0733	12'-0"	12'-0"	13'-0 1/2"	4'-0"	7'-0"
	J-904B-160	4B0735	14'-0"	12'-0"	13'-4 1/8"	4'-0"	7'-0"
	J-904B-160	4B0737	16'-0"	12'-0"	13'-6 1/8"	4'-0"	8'-0"
	J-904B-180	4B0739	18'-0"	12'-0"	13'-6 1/8"	4'-0"	8'-0"
J-904B-180	4B0741	20'-0"	12'-0"	13'-6 1/8"	4'-0"	8'-0"	
3	J-904B-160	4B0900	10'-0"	12'-0"	13'-4 1/8"	4'-0"	7'-0"
	J-904B-180	4B0902	12'-0"	12'-0"	13'-4 1/8"	4'-0"	7'-0"
	J-904B-180	4B0904	14'-0"	12'-0"	13'-6 1/8"	4'-0"	8'-0"
	J-904B-200	4B0906	16'-0"	12'-0"	13'-6 1/8"	4'-0"	8'-0"
	J-904B-200	4B0908	18'-0"	12'-0"	13'-9"	4'-0"	9'-0"
J-904B-240	4B0910	20'-0"	12'-0"	14'-0 1/8"	4'-0"	9'-0"	
5	J-904B-200	4B1238	10'-0"	12'-0"	13'-6 1/8"	4'-0"	9'-0"
	J-904B-240	4B1240	12'-0"	12'-0"	13'-6 1/8"	4'-0"	9'-0"
	J-904B-240	4B1242	14'-0"	12'-0"	13'-9"	4'-0"	9'-0"
	J-904B-240	4B1244	16'-0"	12'-0"	14'-0 1/8"	4'-0"	10'-0"
	J-904B-300H	4B1246	18'-0"	12'-0"	14'-0 1/4"	4'-0"	10'-0"
J-904B-300H	4B1248	20'-0"	12'-0"	14'-0 1/4"	4'-0"	10'-0"	

Optional Models:

Part #	Description
J-904BMD	Base Mount - Electric Motor Drive
J-904BAMD	Base Mount - Air Motor Drive
J-904BHG	Base Mount - Hand Geared