

## PL

FIXED FORK PALLET LIFTER..... Page 68



## PLAF

ADJUSTABLE FORK PALLET LIFTER ..... Page 69



## PLHW

ADJUSTABLE FORK PALLET LIFTER ..... Page 70



## PLHD

FIXED FORK HEAVY DUTY PALLET LIFTER..... Page 71



## PLHA

ADJUSTABLE FORK HEAVY DUTY PALLET LIFTER..... Page 72



## PLAH

ADJUSTABLE FORK HEAVY DUTY PALLET LIFTER w/Hand Wheel..... Page 73



## PLWL

WHEELED PALLET LIFTER..... Page 74



## PLLW

LIGHTWEIGHT PALLET LIFTER..... Page 75



# LIFTING EQUIPMENT



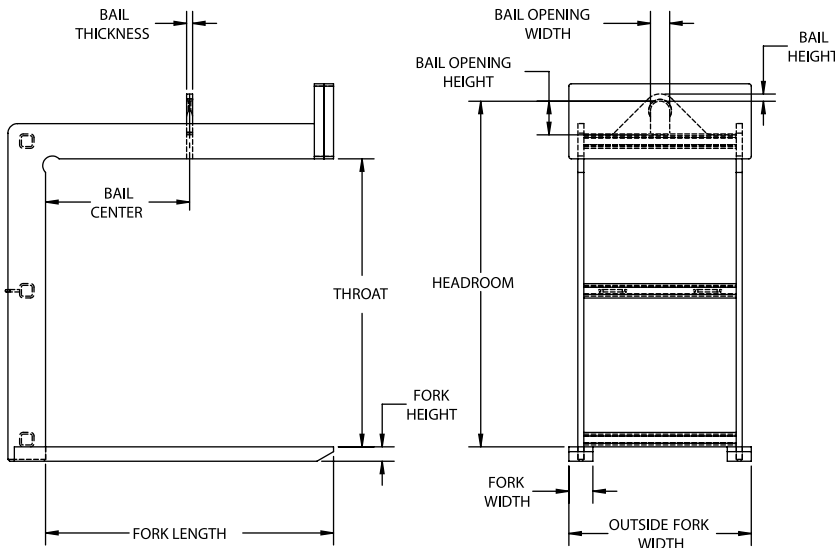
## FIXED FORK PALLET LIFTER

### FEATURES

- This style of lifter is designed to lift and carry palletized loads efficiently with an overhead crane.
- Counter balanced to hang level when unloaded.
- Easily maintained low headroom design.
- The bail is a lower headroom design and is positioned to avoid side loading the crane hook.
- Engineered and manufactured to ASME B30.20 & BTH-1 Design Category B Service Class 2.
- **Proof-Tested to 125% capacity and certificates supplied at No Additional Charge.**

### OPTIONS

- Larger throat openings
- Greater outside fork widths
- Additional sizes and capacities available



PALLET LIFTERS

Model #	Capacity (US Tons)*	Dimensions (Inches)											Weight (Lbs.)
		Fork Length	Fork Width	Fork Height	Outside Fork Width	Bail Center	Throat Opening Height	Headroom	Bail Height	Bail Opening Width	Bail Opening Height	Bail Thickness	
PL-1-36	1	36	2	2	25	18	48	57.5	0.88	3	5	0.75	425
PL-1-42	1	42	2	2	25	21	48	57.5	0.88	3	5	0.75	450
PL-1-48	1	48	2	2	25	24	48	58.5	0.88	3	5	0.75	540
PL-1.5-36	1.5	36	3	2	25	18	48	58.5	0.88	3	5	0.75	565
PL-1.5-42	1.5	42	3	2	25	21	48	58.5	0.88	3	5	0.75	630
PL-1.5-48	1.5	48	3	2	25	24	48	58.5	0.88	3	5	0.75	665
PL-2-36	2	36	3	2	25	18	48	59.5	0.88	3	5	0.75	650
PL-2-42	2	42	4	2	25	21	48	59.5	0.88	3	5	0.75	780
PL-2-48	2	48	4	2	25	24	48	59.5	0.88	3	5	0.75	910
PL-3-42	3	42	4.5	2.5	25	21	48	61.5	1.25	3	5	1	1110
PL-3-48	3	48	4.5	2.5	27	24	48	61.5	1.25	3	5	1	1195
PL-3-54	3	54	4.5	2.5	30	27	48	61.5	1.25	3	5	1	1405
PL-4-48	4	48	5	3	27	24	48	63.5	1.25	3	5	1	1705
PL-4-60	4	60	5	3	30	30	60	75.5	1.25	3	5	1	2020
PL-5-48	5	48	5	3	30	24	48	63.5	1.5	4	7	1.25	1730
PL-5-60	5	60	5	3	38	30	60	75.5	1.5	4	7	1.25	2035

NOTE: Additional 2"-3" clearance is recommended above the load for ease of loading and unloading the pallet lifter. \* 1 US Ton = 2,000 Lbs



**DO NOT EXCEED CAPACITY!**  
See the SAFETY GUIDELINES section before using these products. Pages 88-90.

# PALLET LIFTERS



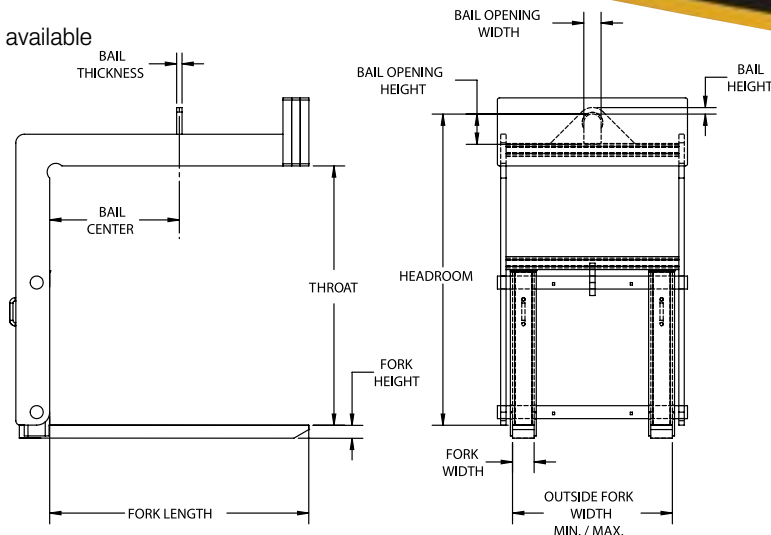
## ADJUSTABLE FORK PALLET LIFTER

### FEATURES

- This style of lifter is designed to lift and carry palletized loads efficiently with an overhead crane.
- Supplied standard with manually adjustable forks that allow the lifter to handle various pallet sizes.
- Counter balanced to hang level when unloaded.
- Easily maintained low headroom design.
- The bail is a lower headroom design and is positioned to avoid side loading the crane hook.
- Engineered and manufactured to ASME B30.20 & BTH-1 Design Category B Service Class 2.
- **Proof-Tested to 125% capacity and certificates supplied at No Additional Charge.**

### OPTIONS

- Larger throat openings
- Greater outside fork widths
- Additional sizes and capacities available



Model #	Capacity (US Tons)*	Dimensions (Inches)											Weight (Lbs.)
		Fork Length	Fork Width	Fork Height	Outside Fork Width Min/Max	Bail Center	Throat Opening Height	Headroom	Bail Height	Bail Opening Width	Bail Opening Height	Bail Thickness	
PLAF-1-36	1	36	2	2	16/38	18	48	58	0.88	3	5	0.75	900
PLAF-1-42	1	42	2	2	16/38	21	48	58	0.88	3	5	0.75	1025
PLAF-1-48	1	48	2	2	16/38	24	48	59	0.88	3	5	0.75	1050
PLAF-1.5-36	1.5	36	3	2	16/38	18	48	59	0.88	3	5	0.75	1140
PLAF-1.5-42	1.5	42	3	2	16/38	21	48	59	0.88	3	5	0.75	1215
PLAF-1.5-48	1.5	48	3	2	16/38	24	48	60	0.88	3	5	0.75	1285
PLAF-2-36	2	36	3	2	16/38	18	48	60	0.88	3	5	0.75	1325
PLAF-2-42	2	42	4	2	16/38	21	48	60	0.88	3	5	0.75	1435
PLAF-2-48	2	48	4	2	16/38	24	48	60	0.88	3	5	0.75	1460
PLAF-3-42	3	42	4.5	2.5	16/38	21	48	61.5	1.25	3	5	1	1690
PLAF-3-48	3	48	4.5	2.5	16/38	24	48	61.5	1.25	3	5	1	1850
PLAF-3-54	3	54	4.5	2.5	16/38	27	48	63	1.25	3	5	1	2700
PLAF-4-48	4	48	5	3	16/38	24	48	64	1.25	3	5	1	2160
PLAF-4-60	4	60	5	3	16/38	30	60	76	1.25	3	5	1	3025
PLAF-5-48	5	48	5	3	16/38	24	48	65	1.5	4	7	1.25	2520
PLAF-5-60	5	60	5	3	16/38	30	60	77	1.5	4	7	1.25	2960

NOTE: Additional 2"-3" clearance is recommended above the load for ease of loading and unloading the pallet lifter. \* 1 US Ton = 2,000 Lbs



**DO NOT EXCEED CAPACITY!**  
See the SAFETY GUIDELINES section before using these products. Pages 88-90.

# LIFTING EQUIPMENT



## ADJUSTABLE FORK PALLET LIFTER w/HAND WHEEL

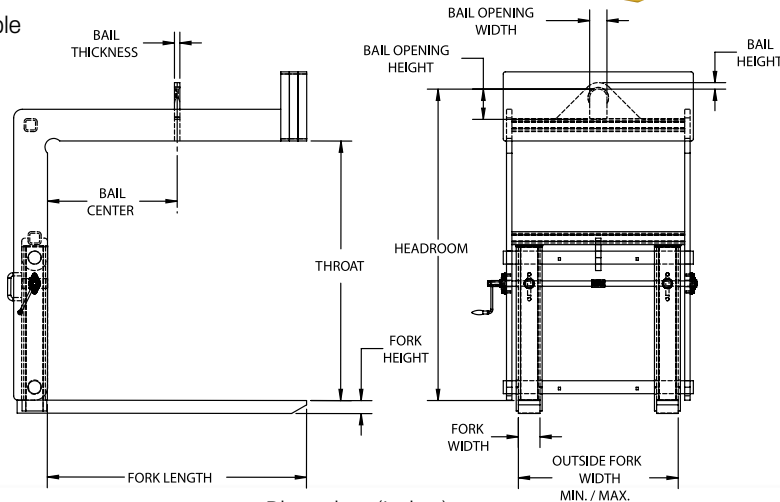
### FEATURES

- This style of lifter is designed to lift and carry palletized loads efficiently with an overhead crane.
- Supplied standard with a hand wheel to adjust forks to allow the lifter to handle various pallet sizes.
- Counter balanced to hang level when unloaded.
- Easily maintained low headroom design.
- The bail is a lower headroom design and is positioned to avoid side loading the crane hook.
- Engineered and manufactured to ASME B30.20 & BTH-1 Design Category B Service Class 2.
- **Proof-Tested to 125% capacity and certificates supplied at No Additional Charge.**



### OPTIONS

- Larger throat openings
- Greater outside fork widths
- Additional sizes and capacities available



PALLET LIFTERS

Model #	Capacity (US Tons)*	Dimensions (Inches)											Weight (Lbs.)
		Fork Length	Fork Width	Fork Height	Outside Fork Width Min/ Max	Bail Center	Throat Opening Height	Head-room	Bail Height	Bail Opening Width	Bail Opening Height	Bail Thickness	
PLHW-1-36	1	36	2	2	16/38	18	48	58	0.88	3	5	0.75	950
PLHW-1-42	1	42	2	2	16/38	21	48	58	0.88	3	5	0.75	1075
PLHW-1-48	1	48	2	2	16/38	24	48	59	0.88	3	5	0.75	1100
PLHW-1.5-36	1.5	36	3	2	16/38	18	48	59	0.88	3	5	0.75	1190
PLHW-1.5-42	1.5	42	3	2	16/38	21	48	59	0.88	3	5	0.75	1265
PLHW-1.5-48	1.5	48	3	2	16/38	24	48	60	0.88	3	5	0.75	1335
PLHW-2-36	2	36	3	2	16/38	18	48	60	0.88	3	5	0.75	1275
PLHW-2-42	2	42	4	2	16/38	21	48	60	0.88	3	5	0.75	1485
PLHW-2-48	2	48	4	2	16/38	24	48	60	0.88	3	5	0.75	1510
PLHW-3-42	3	42	4.5	2.5	16/38	21	48	61.5	1.25	3	5	1	1740
PLHW-3-48	3	48	4.5	2.5	16/38	24	48	61.5	1.25	3	5	1	1900
PLHW-3-54	3	54	4.5	2.5	16/38	27	48	63	1.25	3	5	1	2750
PLHW-4-48	4	48	5	3	16/38	24	48	64	1.25	3	5	1	2210
PLHW-4-60	4	60	5	3	16/38	30	60	76	1.25	3	5	1	3075
PLHW-5-48	5	48	5	3	16/38	24	48	65	1.5	4	7	1.25	2570
PLHW-5-60	5	60	5	3	16/38	30	60	77	1.5	4	7	1.25	3010

NOTE: Additional 2"-3" clearance is recommended above the load for ease of loading and unloading the pallet lifter. \* 1 US Ton = 2,000 Lbs



**DO NOT EXCEED CAPACITY!**  
See the SAFETY GUIDELINES section before using these products. Pages 88-90.

# PALLET LIFTERS

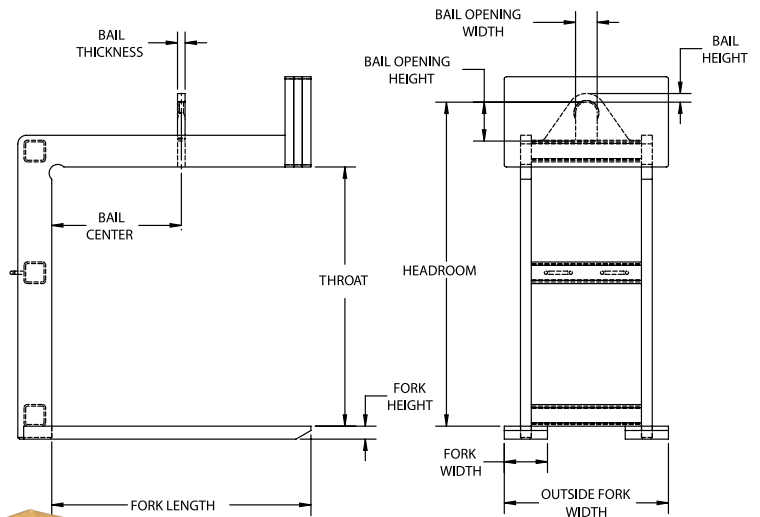
## PLHD FIXED FORK HEAVY DUTY PALLET LIFTER

### FEATURES

- This style of lifter is designed with a double frame to lift and carry heavy palletized loads efficiently with an overhead crane.
- Counter balanced to hang level when unloaded.
- Easily maintained low headroom design.
- The bail is a lower headroom design and is positioned to avoid side loading the crane hook.
- Engineered and manufactured to ASME B30.20 & BTH-1 Design Category B Service Class 2.
- **Proof-Tested to 125% capacity and certificates supplied at No Additional Charge.**

### OPTIONS

- Larger throat openings
- Greater outside fork widths
- Additional sizes and capacities available



Model #	Capacity (US Tons)*	Dimensions (Inches)											Weight (Lbs.)
		Fork Length	Fork Width	Fork Height	Outside Fork Width	Bail Center	Throat Opening Height	Head-room	Bail Height	Bail Opening Width	Bail Opening Height	Bail Thickness	
PLHD-7.5-48	7.5	48	6	3	30	24	48	65	1.50	4	7	1.50	2485
PLHD-7.5-60	7.5	60	8	3	38	30	60	79	1.50	4	7	1.50	3120
PLHD-10-48	10	48	8	3	30	24	48	69	2	5	9	1.75	2540
PLHD-10-60	10	60	10	3	38	30	60	81	2	5	9	1.75	4025
PLHD-15-48	15	48	10	3	38	24	60	84	2	5	9	1.75	2925
PLHD-15-60	15	60	10	3.5	38	30	60	75	2	5	9	1.75	4940
PLHD-20-60	20	60	10	4	38	30	60	88	2.25	6	12	2	5590
PLHD-20-72	20	72	12	4	44	36	60	88	2.25	6	12	2	6300

NOTE: Additional 2"-3" clearance is recommended above the load for ease of loading and unloading the pallet lifter. \* 1 US Ton = 2,000 Lbs



DO NOT EXCEED CAPACITY!  
See the SAFETY GUIDELINES section before using these products. Pages 88-90.

# LIFTING EQUIPMENT



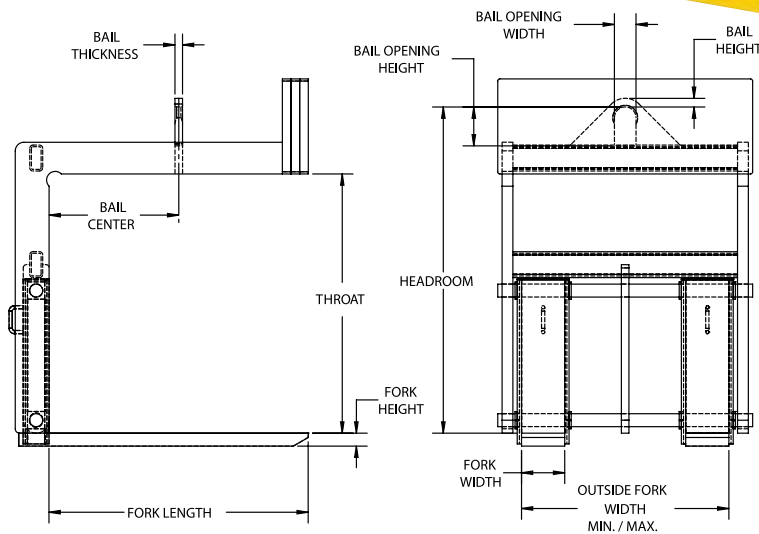
## ADJUSTABLE FORK HEAVY DUTY PALLET LIFTER

### FEATURES

- This style of lifter is designed with a double frame and forged forks to lift and carry heavy palletized loads efficiently with an overhead crane.
- Supplied standard with manually adjustable forks that allow the lifter to handle various pallet sizes.
- Counter balanced to hang level when unloaded.
- Easily maintained low headroom design.
- The bail is a lower headroom design and is positioned to avoid side loading the crane hook.
- Engineered and manufactured to ASME B30.20 & BTH-1 Design Category B Service Class 2.
- **Proof-Tested to 125% capacity and certificates supplied at No Additional Charge.**

### OPTIONS

- Larger throat openings
- Greater outside fork widths
- Additional sizes and capacities available



PALLET LIFTERS

Model #	Capacity (US Tons)*	Dimensions (Inches)											Weight (Lbs.)
		Fork Length	Fork Width	Fork Height	Outside Fork Width Min/Max	Bail Center	Throat Opening Height	Headroom	Bail Height	Bail Opening Width	Bail Opening Height	Bail Thickness	
PLHA-7.5-48	7.5	48	6	3	16/48	24	48	61	1.50	4	7	1.50	3200
PLHA-7.5-60	7.5	60	8	3	20/48	30	60	74	1.50	4	7	1.50	4300
PLHA-7.5-72	7.5	72	10	3	24/48	36	60	76	1.50	4	7	1.50	4900
PLHA-10-48	10	48	8	3	20/48	24	48	64	2	5	9	1.75	3800
PLHA-10-60	10	60	10	3	24/48	30	60	76	2	5	9	1.75	5600
PLHA-10-72	10	72	10	3.5	24/48	36	60	76	2	5	9	1.75	6400
PLHA-12.5-48	12.5	48	8	3	16/48	24	48	78	2	5	9	1.75	5100
PLHA-12.5-60	12.5	60	10	3	24/48	30	60	78	2	5	9	1.75	6200
PLHA-12.5-72	12.5	72	10	3.5	24/48	36	60	78	2	5	9	1.75	7200

NOTE: Additional 2"-3" clearance is recommended above the load for ease of loading and unloading the pallet lifter. \* 1 US Ton = 2,000 Lbs



**DO NOT EXCEED CAPACITY!**  
See the SAFETY GUIDELINES section before using these products. Pages 88-90.

# PALLET LIFTERS

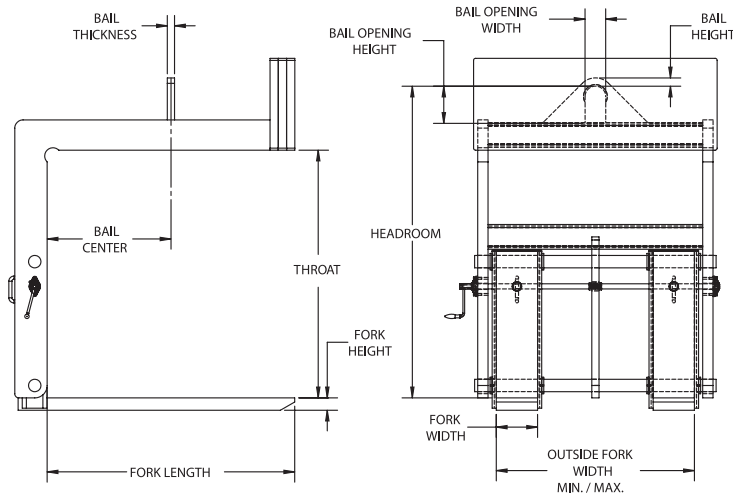
## PLAH ADJUSTABLE FORK HEAVY DUTY PALLET LIFTER w/Hand Wheel

### FEATURES

- This style of lifter is designed with a double frame and forged forks to lift and carry heavy palletized loads efficiently with an overhead crane.
- Supplied standard with a hand wheel to adjust forks to allow the lifter to handle various pallet sizes.
- Counter balanced to hang level when unloaded.
- Easily maintained low headroom design.
- The bail is a lower headroom design and is positioned to avoid side loading the crane hook.
- Engineered and manufactured to ASME B30.20 & BTH-1 Design Category B Service Class 2.
- **Proof-Tested to 125% capacity and certificates supplied at No Additional Charge.**

### OPTIONS

- Larger throat openings
- Greater outside fork widths
- Additional sizes and capacities available



Model #	Capacity (US Tons)*	Dimensions (Inches)											Weight (Lbs.)
		Fork Length	Fork Width	Fork Height	Outside Fork Width Min/Max	Bail Center	Throat Opening Height	Headroom	Bail Height	Bail Opening Width	Bail Opening Height	Bail Thickness	
PLAH-7.5-48	7.5	48	6	3	16/48	24	48	66	1.50	4	7	1.50	3350
PLAH-7.5-60	7.5	60	8	3	20/48	30	60	77.5	1.50	4	7	1.50	4550
PLAH-7.5-72	7.5	72	10	3	24/48	36	60	80	1.50	4	7	1.50	5050
PLAH-10-48	10	48	8	3	20/48	24	48	65.5	2	5	9	1.75	3950
PLAH-10-60	10	60	10	3	24/48	30	60	77.5	2	5	9	1.75	5750
PLAH-10-72	10	72	10	3.5	24/48	36	60	82	2	5	9	1.75	6550
PLAH-12.5-48	12.5	48	8	3	16/48	24	48	82	2	5	9	1.75	5250
PLAH-12.5-60	12.5	60	10	3	24/48	30	60	82	2	5	9	1.75	6350
PLAH-12.5-72	12.5	72	10	3.5	24/48	36	60	82	2	5	9	1.75	7350
PLAH-15-60	15	60	10	3.5	24/48	30	60	82	2	5	9	1.75	7050
PLAH-15-72	15	72	12	3.5	28/48	36	60	82.5	2	5	9	1.75	8450

NOTE: Additional 2"-3" clearance is recommended above the load for ease of loading and unloading the pallet lifter. \* 1 US Ton = 2,000 Lbs



**DO NOT EXCEED CAPACITY!**  
See the SAFETY GUIDELINES section before using these products. Pages 88-90.

# LIFTING EQUIPMENT



## WHEELED PALLET LIFTER

### FEATURES

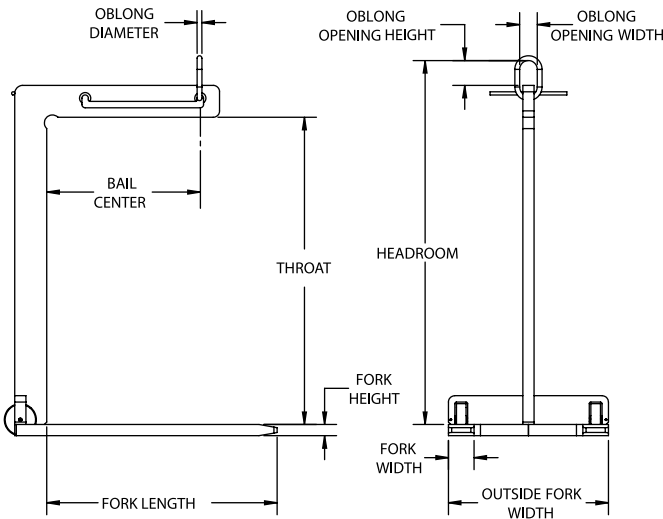
- This style of lifter is designed to lift and carry palletized loads efficiently with an overhead crane.
- Wheeled design allows for ease of movement to the load and dual lift points allow the lifter to hang level when unloaded.
- Easily maintained low headroom design.
- Engineered and manufactured to ASME B30.20 & BTH-1 Design Category B Service Class 2.
- **Proof-Tested to 125% capacity and certificates supplied at No Additional Charge.**

### OPTIONS

- Larger throat openings
- Replacement wheel kits are available
- Greater outside fork widths
- Additional sizes and capacities available



PALLET LIFTERS



Model #	Capacity (US Tons)*	Dimensions (Inches)										Weight (Lbs.)
		Fork Length	Fork Width	Fork Height	Outside Fork Width	Bail Center	Throat Opening Height	Head-room	Oblong ML Diameter	Oblong ML Opening Width	Oblong ML Opening Height	
PLWL-1-48	1	36	2	1.75	25	24	48	53	0.63	3	6	255
PLWL-2-48	2	36	4	1.75	25	24	48	57	0.63	3	6	435

NOTE: Additional 2"-3" clearance is recommended above the load for ease of loading and unloading the pallet lifter.

\* 1 US Ton = 2,000 Lbs



**DO NOT EXCEED CAPACITY!**  
See the SAFETY GUIDELINES section before using these products. Pages 88-90.

# PALLET LIFTERS



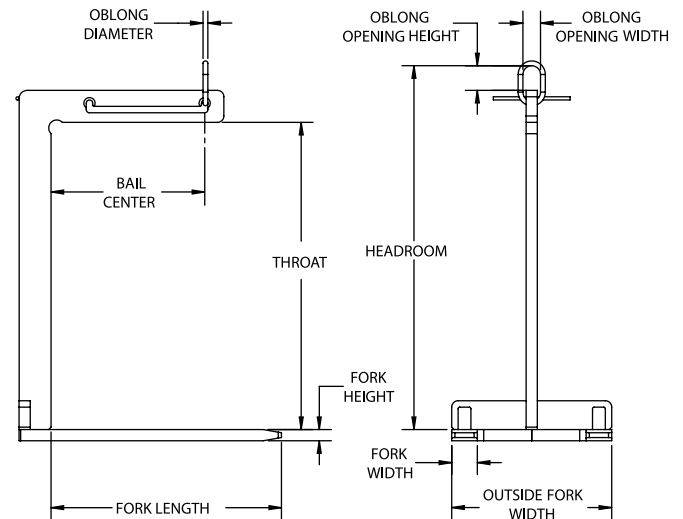
## LIGHTWEIGHT PALLET LIFTER

### FEATURES

- This style of lifter is designed to lift and carry palletized loads efficiently with an overhead crane.
- Lightweight design allows for ease of movement to the load and dual lift points allow the lifter to hang level when unloaded.
- Easily maintained low headroom design.
- Engineered and manufactured to ASME B30.20 & BTH-1 Design Category B Service Class 2.
- **Proof-Tested to 125% capacity and certificates supplied at No Additional Charge.**

### OPTIONS

- Larger throat openings
- Greater outside fork widths
- Additional sizes and capacities available



Model #	Capacity (US Tons)*	Dimensions (Inches)										Weight (Lbs.)
		Fork Length	Fork Width	Fork Height	Outside Fork Width	Bail Center	Throat Opening Height	Head-room	Oblong ML Diameter	Oblong ML Opening Width	Oblong ML Opening Height	
PLLW-1-48	1	36	2	1.75	25	24	48	53	0.63	3	6	245
PLLW-2-48	2	36	4	1.75	25	24	48	57	0.63	3	6	425
PLLW-3-48	3	36	5	2	27	24	48	62	1	3.5	7	625

NOTE: Additional 2"-3" clearance is recommended above the load for ease of loading and unloading the pallet lifter.

\* 1 US Ton = 2,000 Lbs



DO NOT EXCEED CAPACITY!  
See the SAFETY GUIDELINES section before using these products. Pages 88-90.