

BEAM CLAMP



Features

- Robust, all-steel construction
- Super-quick adjustment to fit most I-Beams (see measurements below)
- Durable baked-enamel paint protection
- Stainless steel ID tag
- Individual test certificate and serial number

Standards - CE, ASME/ANSI B30.16

	OZ1BC	OZ2BC	OZ3BC	OZ5BC	OZ10BC
Capacity (tons)	1	2	3	5	10
A	2.95-9.05	2.95-9.05	3.15-12.60	3.54-12.60	3.54-12.60
B	14.96 max.	14.96 max.	18.50 max.	19.68 max.	20.47 max.
C	2.51	2.91	3.94	4.41	4.72
Dimensions (in)					
D	.90	.90	1.57	1.57	1.60
E	9.13	9.13	10.63	10.90	11.22
F	3.54-5.90	3.54-5.90	5.71-8.66	5.71-8.66	6.30-9.05
G	1.02	1.02	2.63	3.50	3.87
H	.75	.87	.96	1.30	1.60
Net Weight (lb.)	9	11	21	25	35

PUSH BEAM TROLLEY



Features

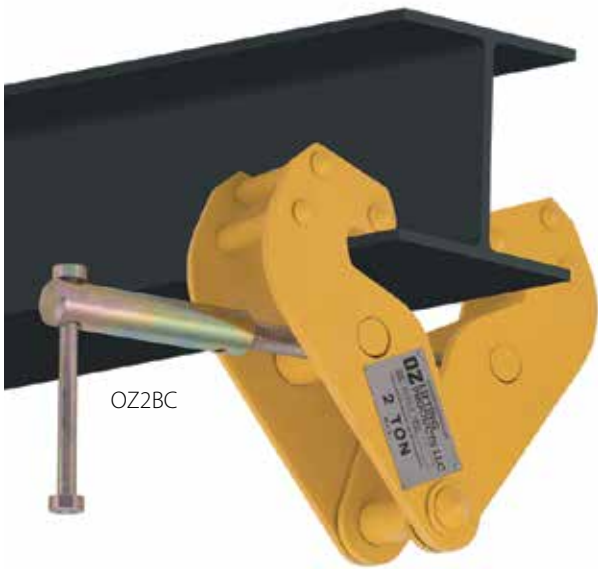
- Lightweight robust construction
- Fits most I, S, and W-Beams
- Durable baked enamel paint protection
- Precision ball bearing trolley wheels
- Anti-drop plate
- Stainless steel ID tag
- Individual test certificate and serial number

Standards - CE, ASME /ANSI B30.17

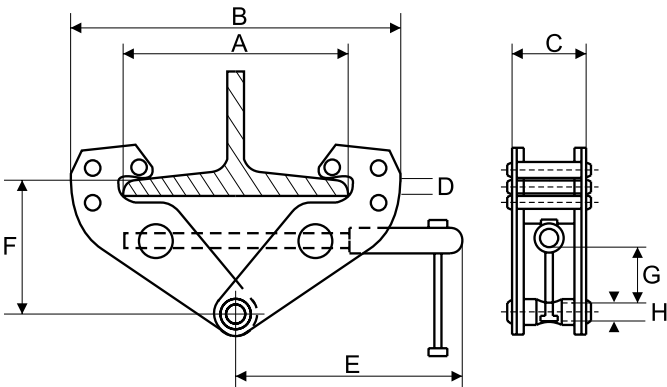
	OZ025PBT	OZ05PBT	OZ1PBT	OZ2PBT	OZ3PBT	OZ5PBT	OZ10PBT
Capacity (tons)	.25	.5	1	2	3	5	10
Adjustable Flange Width (in)	2.00-6.00	2.52-8.00	2.52-8.00	3.46-12.00	4.33-12.00	4.49-12.00	4.95-12.00
Max Flange Thickness (in)	0.82	1.14	1.50	1.18	1.36	1.44	1.97
Product Dimensions (in)							
A	10.00	12.25	12.75	17.0	17.72	18.90	17.56
B	7.68	8.35	9.45	11.53	13.78	15.04	16.75
C	6.77	7.67	8.74	10.53	12.68	14.65	16.00
D	4.02	4.33	4.90	5.79	6.83	7.87	7.5
Minimum Radius Curve (ft)	3.25	3.28	3.28	3.28	4.59	3.28	8.20
Net Weight (lb.)	7.7	12	23	40	66	100	192
Bail Pins	1	1	1	1	1	1	2

See wheel and bail dimensions on page 18

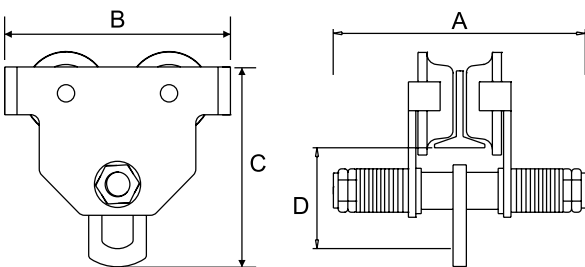
Dimensions and illustrations are for reference only and subject to change without notice.



OZ2BC

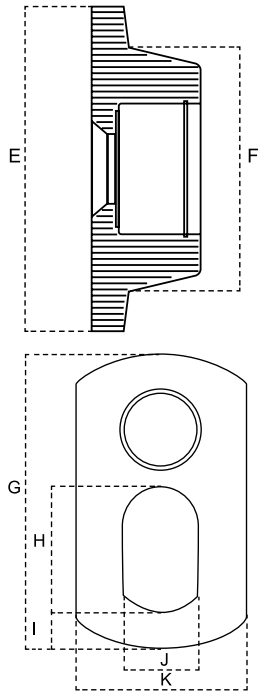


OZ3PBT



WARNING
CANCER AND REPRODUCTIVE HARM
 Some products may contain chemicals known to the state of California to cause cancer, or birth defect or reproductive harm.
www.P65Warning.ca.gov

PUSH BEAM TROLLEY WHEELS & BAIL DIMENSIONS



USA – See product page 16 & 17

	OZ05PBTA	OZ1PBTA	OZ2PBTA	OZ3PBTA
E (in)	3.25	4.00	4.5	5.75
F (in)	2.38	3.00	3.25	4.38
G (in)	4.38	5.00	6.25	6.88
H (in)	1.50	1.88	2.25	2.5
I (in)	0.63	0.63	0.88	1.0
J (in)	1.00	1.25	1.38	1.5
K (in)	2.25	2.50	3.13	3.5
L (in)	0.38	0.50	0.50	0.63

Import – See product page 18

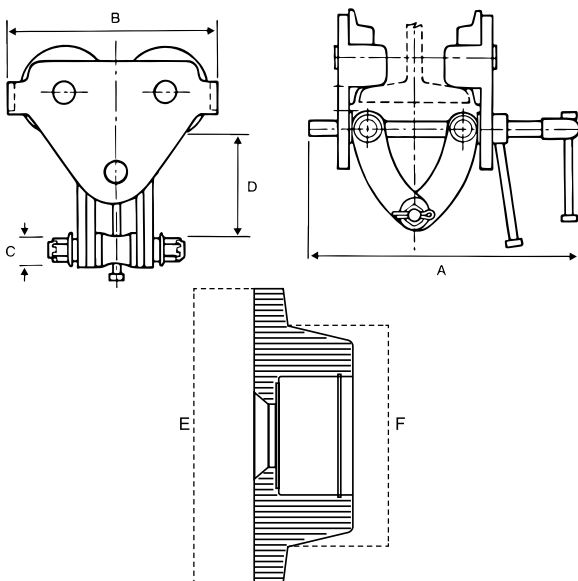
	OZ025PBT	OZ05PBT	OZ1PBT	OZ2PBT	OZ3PBT	OZ5PBT	OZ10PBT
E (in)	2.56	2.83	3.50	4.53	5.51	6.06	6.91
F (in)	1.77	2.05	2.48	3.35	4.13	4.60	5.24
G (in)	3.27	4.06	4.21	5.43	6.50	7.87	7.68
H (in)	1.18	1.52	1.52	2.24	2.68	3.15	4.49
I (in)	0.59	0.75	0.75	0.83	1.02	1.44	1.91
J (in)	0.94	1.26	1.26	1.34	1.65	1.89	3.35
K (in)	1.65	2.24	2.24	3.15	3.74	4.33	11.22
L (in)	0.24	0.31	0.39	0.47	0.16	0.71	0.79

QUICK ADJUST TROLLEY

Features

- Lightweight, robust construction.
- Super-quick adjustment to most I, S, and W-Beams (see measurements below)
- Safety handle lock
- Durable baked-enamel paint protection
- Precision ball bearing trolley wheels
- Anti-drop plate
- Stainless steel ID tag
- Individual test certificate and serial number

Standards - CE, ASME/ANSI B30.17



OZ1QAT

	OZ05QAT	OZ1QAT	OZ2QAT	OZ3QAT	OZ5QAT	OZ10QAT
Capacity (tons)	5	1	2	3	5	10
Adjustable Flange Width (in)	3.63-7.12	2.48-8.27	2.99-8.27	2.99-8.27	3.94-12.01	6.89-12.01
Max Flange Thickness (in)	1.44	2	2.17	1.42	3.07	2.13
Dimensional Information (in)	A	11.75	13.98	14.17	14.17	18.50
	B	8.00	9.53	11.06	12.91	14.84
	C	.75	.88	.88	.97	1.11
(min-max)	D	5.87-7.12	5.75-7.22	6.06-7.22	6.35-7.97	8.81-10.61
Minimum Curve Radius (ft)	3.28	3.28	3.61	4.26	4.60	5.57
Net Weight (lb.)	13	25	38	57	102	205

	OZ05QAT	OZ1QAT	OZ2QAT	OZ3QAT	OZ5QAT	OZ10QAT
E (in)	3.22	4.02	5.00	5.79	6.30	7.34
F (in)	2.28	2.96	3.55	4.34	4.81	5.96



Dimensions and illustrations are for reference only and subject to change without notice.



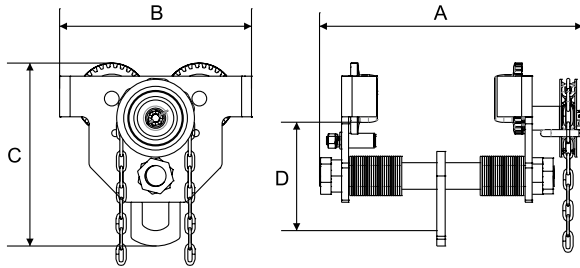
GEARED BEAM TROLLEY



Features

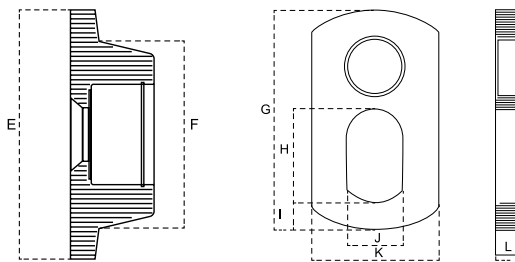
- Lightweight robust construction
- Fits most I, S, and W-Beams
- Durable baked enamel paint protection
- Gearing for positive load positioning
- Precision ball bearing trolley wheels
- Anti-drop plate
- Individual test certificate & serial number
- Zinc plated hand chain standard. Stainless steel hand chain available on request

Standards - CE, ASME/ANSI B30.17



	OZ1GBT	OZ2GBT	OZ3GBT	OZ5GBT	OZ10GBT	OZ20GBT	OZ30GBT
Capacity (tons)	1	2	3	5	10	20	30
Adjustable Flange Width (in)	2.52-8	3.46-8	3.46-8	3.46-8	4.88-8	5.39-13	5.83-13
Max Flange Thickness (in)	1.50	1.61	1.81	2.28	1.97	2.17	2.36
Product Dimensions (in)							
A	14.96	15.20	16.38	17.09	15.59	26.61	27.56
B	9.45	10.63	12.60	13.62	16.77	20.79	23.31
C	8.41	10.28	12.48	15.08	15.75	19.65	24.33
D	4.90	6.08	7.30	9.09	8.31	9.96	12.35
Minimum Radius Curve (ft)	3.28	4.27	4.92	5.25	8.3	16.40	16.40
Net Weight (lb.)	29	42	62	90	183	406	650
Standard Length of Hand Chain (ft)	9.00	9.00	9.00	9.00	9.00	9.00	9.00
Effort to Pull (lb.)	10	18	29	24	42	18	24
Chain pulled to move one foot (ft)	3.80	3.90	3.70	4.02	18.90	47.83	31
Bail Pins	1	1	1	1	2	2	2

50 and 100 T models available. Special order only. Please contact for specifications.



	OZ1GBT	OZ2GBT	OZ3GBT	OZ5GBT	OZ10GBT	OZ20GBT	OZ30GBT
E (in)	3.50	4.00	5.79	6.30	7.45	8.86	10.08
F (in)	2.48	2.68	4.34	4.81	5.95	6.68	7.88
G (in)	3.86	5.31	7.09	8.67	11.23	9.72	12.49
H (in)	1.46	2.01	2.96	3.75	4.73	4.53	6.42
I (in)	0.51	0.87	1.03	1.38	1.78	2.96	2.95
J (in)	1.02	1.50	1.78	2.37	3.23	4.25	5.91
K (in)	1.91	2.76	3.94	4.73	5.91	14.17	16.14
L (in)	0.39	0.47	0.63	0.79	0.99	1.38	1.97



OZ5GBT



OZ30GBT

With Gear Reduction - 20 and 30 T

Dimensions and illustrations are for reference only and subject to change without notice.

