



# NATIONAL INDUSTRIAL SUPPLY

17850 E 14 Mile Rd, Fraser, MI, 48026

(248) 588 - 1828 www.nischain.com

## Project Planning Considerations

### Overhead Handling System Operational & /Characteristic Data

This form is **REQUIRED** for quoting, please fill out all items listed where applicable.

1 New or Existing Facility?

2 Capacity

3 Quantity

4 Crane Configuration Type

- a Bridge Crane
  - i. Single Girder Top Running
  - ii Double Girder Top Running
  - iii Single Girder Under Running
  - iv Double Girder Under Running
- b Gantry Crane
  - i Single Leg Single Girder
  - ii Single Leg Double Girder
  - iii Double Leg Single Girder
  - iv Double Leg Double Girder
- c Wall Traveling Jib Crane

5 Span

6 Lift Height

7 True Vertical Lift Required?

8 Power Supply

- a. Electric
- b. Air
- c. Manual 
  - i. Hand Pushed
  - ii. Chain/Gear Driven

9 Speeds

- a. Hoist
- b. Trolley
- c. Bridge

10 Control Type

- a. 2-Speed
- b. VFD

11 Controller Location / Controls

- a. From Hoist
- b. Sliding PB
- c. Radio Primary w/back up PB
- d. Cab
  - i. Skeleton
  - ii. Enclosed w/climate control

12 Mainline Voltage

13 Control Voltage

14 Environmental

- a. Indoor/Outdoor
- b. Ambient Operating Temperature
- c. Dust Exposure
- d. Hazardous Conditions 
  - i. Explosion Proof 
    - 1 Group, Class & Division (electrical Rating)
  - ii. Spark Resistant (mechanical rating)

15 Service Class Rating

- a. CMAA (crane)
- b. HMI (hoist)
- c. FEM (both)
- d. Load Spectrum
  - i. Shifts per Day
  - ii. Maximum Load
  - iii. Number of Maximum Lifts per Shift
  - iv. Average Load
  - v. Number of Average Lifts Per Shift
  - vi. Average Lift Height

16 Support/Suspension Configuration Runway (If applicable)

- a. Capacity
- b. Length
- c. Support Centers
- d. Clear Ceiling/Lowest Obstruction
- e. Running Surface Above Finish Floor (AFF)
- f. Runway for /Bridge 
  - i. Free Standing (not braced to building steel or other structure)
  - ii. Semi-free Standing (braced to building steel or other structure)
  - iii. Ceiling Suspended 
    - 1 With or Without Suspension Materials
      - a. Be Clear on Design, Bracing Type & Location

2 Will Building Steel Support the Applied Loads?

iv. Runway Beams Only

1 With Tie-backs to Sit on Haunches as Provided by Others

2 Columns to be designed, supplied & Installed by others, Typically Same as Building Support Columns

3 Bottom Flanges of Beams to be Drilled to Match Hole Pattern in Haunches

4 Runway Engineering Study

a. Approved Runway Engineering Study

g. Monorail for Hoist(s) Only

i. Free Standing (not braced to building steel or other structures)

ii. Semi-free Standing (braced to building steel or other structure)

iii. Ceiling Suspended

1 With or Without Suspension Materials

a. Be Clear on Design, Bracing Type & Location

2 Will Building Steel Support the Applied Loads

h. Rail in Floor or Fixed to Finish Surface for Gantry Crane

i. Floor Thickness/Capacity

j. Foundations/Footers Requirement

17 Rail Size

a. Top Running

i. ASCE Type/Size

ii. Square Bar, Dimensions

b. Under Running, Beam Size/Flange Width

18 Mainline Conductors/Power Input

a. Festoon

i. C-Track or Tag Line Suspended

b. Cable Reel

i. Swivel or Fixed

c. Conductor Bars

i. 4 Bar Type

ii. Bottom or Side Entry Type

iii. Enclosed Buss Type

d. Brand

e. Amp Size

f. Tandem Collectors/Single Collectors

g. Is Disconnect Present  Yes  No

i. If Disconnect not Present Quote Disconnect Install

19 Below the Hook Attachment

a. Magnet

b. Spreader Bar

c. Sling

d. Coil Handling

- e. Sheet Lifter
- f. Need for Control from PB or Radio 
  - i. Cable Reel from Hoist to Attachment with Bayonet Style Male & Female Plugs
- g. Constant Load on Hook (or Removed when not in Use)

20 System Design

- a. Drawings for Approval
- b. P.E Design Structural Steel 
  - i. Stamped & Wet Signed Drawings

21 Installation

- a. Union or Non-Union Labor
- b. Rental Equipment Included
- c. Working time Frame Limitations
- d. Space Limitations
- e. Production Considerations
- f. Applicable Contractor Insurance Requirement

22 Delivery

- a. Date for Delivery & Installation 
  - i. Flexible or Critical

# CRANE DATA SHEET



**NATIONAL INDUSTRIAL SUPPLY**

17850 E 14 Mile Rd, Fraser, MI, 48026  
(248) 588 - 1828 www.nischain.com

Customer \_\_\_\_\_

Date \_\_\_\_\_

New Construction \_\_\_\_\_ Existing Building \_\_\_\_\_

**CRANE INFORMATION**    TRSG \_\_\_\_\_ TRDG \_\_\_\_\_ UHSG \_\_\_\_\_ UHDG \_\_\_\_\_

No. Cranes per Runway \_\_\_\_\_ Type(s) of Material being handled \_\_\_\_\_  
Capacity \_\_\_\_\_ Span \_\_\_\_\_ Motorized (no. of speeds) \_\_\_\_\_ Manual/Push type \_\_\_\_\_  
Hoist \_\_\_\_\_ Trolley speeds \_\_\_\_\_ Brand preference \_\_\_\_\_  
Hrs/Day \_\_\_\_\_ Lifts/hr \_\_\_\_\_ Outdoor? \_\_\_\_\_ Color if not Yellow \_\_\_\_\_

**HOIST/TROLLEY INFORMATION**    Hoist Supplied by Others \_\_\_\_\_

Electric \_\_\_\_\_ Manual \_\_\_\_\_ Chain \_\_\_\_\_ Wire rope \_\_\_\_\_  
Lift needed \_\_\_\_\_ Low headroom \_\_\_\_\_ Voltage \_\_\_\_\_  
Hoist speeds \_\_\_\_\_ Trolley speeds \_\_\_\_\_ Brand preference \_\_\_\_\_

**MONORAIL SYSTEMS**

Free standing \_\_\_\_\_  
Ceiling mounted \_\_\_\_\_  
Other \_\_\_\_\_  
Capacity \_\_\_\_\_  
Monorail length \_\_\_\_\_  
Support centers \_\_\_\_\_  
Overall height length \_\_\_\_\_  
Hanger length (Ceiling mounted) \_\_\_\_\_

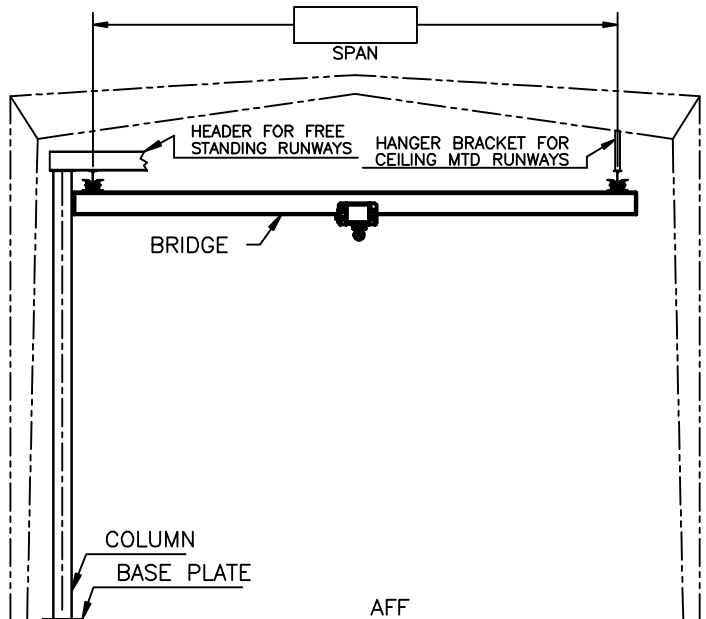
**INSTALLATION**

Yes \_\_\_\_\_  
No \_\_\_\_\_  
Supervision only \_\_\_\_\_

\_\_\_\_\_  
City & State

**UNDERHUNG RUNWAY SYSTEMS**

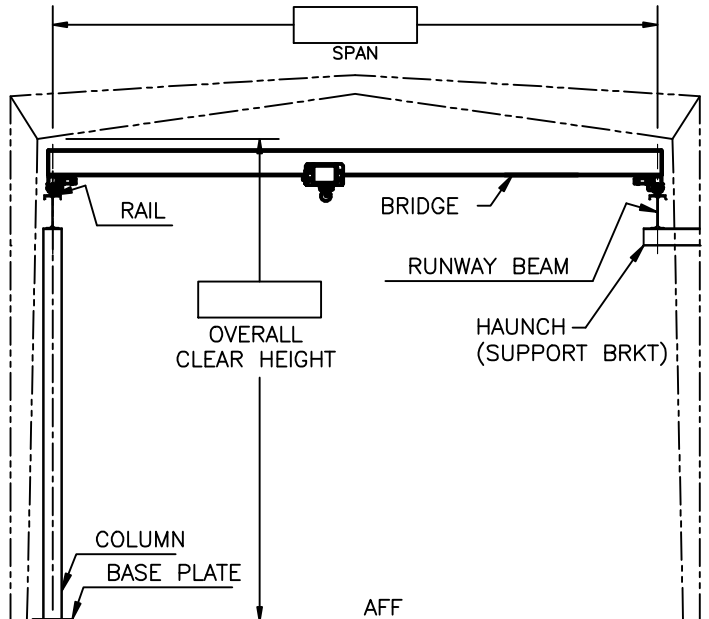
Free standing \_\_\_\_\_  
Free standing workstation \_\_\_\_\_  
Ceiling mounted \_\_\_\_\_  
Capacity \_\_\_\_\_ Runway length \_\_\_\_\_  
Support centers \_\_\_\_\_ Overall height \_\_\_\_\_  
Hanger length (Ceiling mounted) \_\_\_\_\_



**UNDERHUNG RUNWAY SYSTEMS**

**TOP RUNNING RUNWAY SYSTEMS**

Brace back to building steel \_\_\_\_\_  
Beams, rail & electrification only by others \_\_\_\_\_  
Capacity \_\_\_\_\_  
Runway length \_\_\_\_\_  
Support centers \_\_\_\_\_  
Overall height \_\_\_\_\_



**TOP RUNNING RUNWAY SYSTEMS**